

### Personal, Social and Emotional Development

This week, we are discussing giving and sharing and how those who celebrate this season give and receive gifts on Christmas day.

#### At home

At home, discuss the importance of giving and not just receiving and how giving makes you feel. Can you think of another time we might give to others?

### Communication and Language

The Jolly Christmas postman is delivering gifts to various fairy-tale characters, and giving everyone surprise envelopes and letters!

#### At home

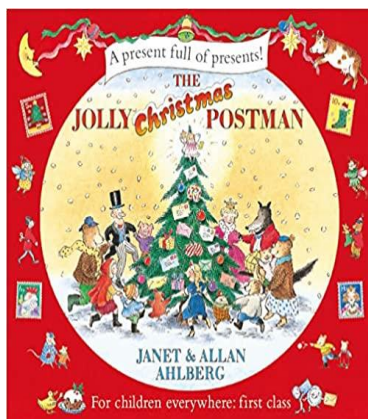
Discuss what gifts your child would like, talk about the postman and where we post letters and why some people celebrate Christmas.

### Physical Development

The Jolly Christmas postman rides his bike up the hill and down dale and into everybody hearts!

#### At home

Can you go on a bike rider or for a walk in the local area going up and down hill just like the Jolly Christmas Postman?



### English

This week, we are focusing on retelling familiar stories based on the characters from the Jolly Christmas Postman as well as singing nursery rhymes. We will also be practising our turn taking skills and ability to follow instructions to play a game.

#### At home

You could ask your child to retell a familiar story. Play games together that require turn-taking or follow instructions to make something.

### Maths

This week we are learning about one more and one less of a number. We will be consolidating our numbers to 5 and using manipulatives to show our understanding of one more or one less.

#### At home

Using anything you can find in your home, practising counting carefully, then ask your child what one more or one less is. Can they show you using the objects?

### At home you may want to...

- Have a go at wrapping presents.
- Get creative! You could design your own wrapping paper using plain paper, stamps, colouring or paint!
- Make sure you have written your Christmas list!

### Reminders

- PE kit: white top, black trousers/shorts, black or red jumper and black shoes every **Tuesday**.
- Christmas Jumper Day is on Friday, 8<sup>th</sup> December.
- Our Christmas shows are next week - please ensure you have booked a ticket otherwise entry may be refused.
- Last day of term - Friday 15<sup>th</sup> December 2023 @ 1:15pm